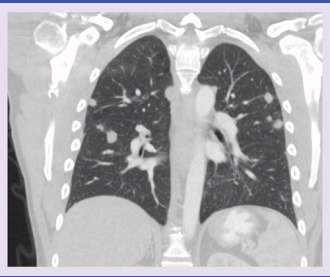
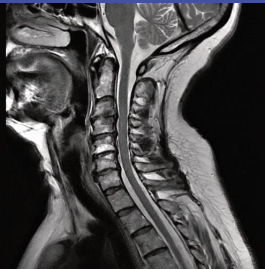




# Ascension Via Christi Imaging



CT



MRI



Ultrasound



Nuclear Medicine



Xray

## Imaging Modalities

- General Radiology - X-ray
- Computed Tomography - CT
- Magnetic Resonance Imaging - MRI
- Ultrasound
- Nuclear Medicine

## What can you expect as a salary?

General Radiology - \$40,000 to \$70,000 annually

CT and MRI - \$55,000 to \$75,000 annually

US/Echo \$60,000 to \$85,000 annually

Nuclear Medicine - \$60,000 to \$85,000 annually

## Kansas Colleges with Radiology programs

- Fort Hays State University
- Hutchinson Community College
- Newman University
- Labette County Community College
- University of Kansas
- Washburn University

Where can you find more information?

<https://www.asrt.org/main/career-center/careers-in-radiologic-technology>